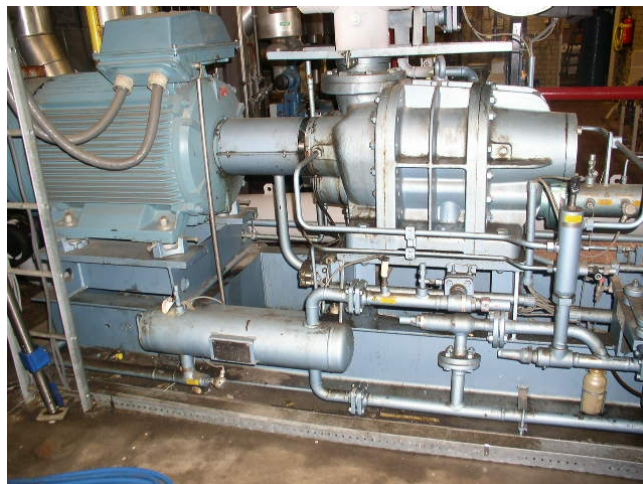


Grasso S3

Specifications

| | |
|--------------------------|---------------------------------|
| Brand | Grasso |
| Type | S3 |
| Refrigerant | NH 3 (ammonia) |
| kW at -30°C/+40°C | 285* |
| kW at -40°C/+40°C | 285* |
| Electromotor Specs | 200 kW at 2960 RPM |
| Unloaded Start | ✓ |
| Capacity Control | ✓ |
| On steel base frame | ✓ |
| Pressure safety switches | ✓ |
| Hp/Lp/Op | |
| Pressure gauges | ✓ |
| Hp/Lp/Op | |
| Liquid receiver | ✓ |
| Oil separator | ✓ |
| Sight Glass | ✓ |
| Control panel | ✓ |
| Remarks | *Capacity based on -37C/+35C |
| Sizes | 3500x1600x2180 mm (LxWxH) |
| Project | Diepop |
| Stock | 1 |



Description

Used Grasso S3

